

Studies on the Subfamily Steninae (Coleoptera, Staphylinidae) from Japan XVIII. Stenid Fauna of Chiba Pref., Central Japan

Shun-Ichiro Naomi¹⁾ and Takaaki Takeda²⁾

1) Natural History Museum and Institute, Chiba

955-2 Aoba-cho, Chiba 280, Japan

2) 1-22-4 Matsugaoka, Funabashi-shi

Chiba 274, Japan

Abstract Twenty two species of the subfamily Steninae are reported from Chiba Pref., Central Japan and a new species, *Stenus kiyosumiensis* is described on the basis of two males collected from southern Boso hill.

Key words : Staphylinidae, Steninae, *Stenus kiyosumiensis* sp. nov.

The genus *Stenus* of Chiba Pref. was hitherto reported only by Yamasaki (1965, 1967, 1972, 1985) and Naomi (1989a, b), and was composed of 6 species (*Stenus alienus* Sharp, *S. distans* Sharp, *S. vercundus melanarius* Sharp, *S. zimmermanni* Puthz, *S. takedai* Naomi and *S. cicindeloides* (Schaller)). We began to make field studies on the stenid fauna of Chiba Pref. since 1989. We collected additional 16 stenid species from various parts of Chiba. So, in this paper we report these 22 species of the genus *Stenus* in total from Chiba Pref. These are composed of 6 subgenera, namely, *Stenus* s. str. (7 species), *Nestus* (4), *Parastenus* (3), *Hemistenus* (1), *Tesnus* (2) and *Hypostenus* (5) (The number in parenthesis means that of species belonging to the corresponding subgenus). Of these, one species is new to science, so we described herein under the name of *Stenus (Parastenus) kiyosumiensis* on the basis of two male specimens.

1. *Stenus (Stenus s. str.) alienus* Sharp

Specimens examined. 1 ex., Tomigaya-bashi, Shiroy-machi, 31. iii. 1990, T. Takeda coll.; 1 ex., Tozura, Yoro-Valley, 22. v. 1990, T. Takeda coll.; 1 ex., Mt. Takago, Kimitsu-shi, 20. vi. 1990, S. Naomi coll.

Remarks. This species is common from plains to low mountainous regions and was found on the ground in grass land, and on the pebbles along the stream. Yamasaki (1967, 1985) reported this species from Inzai-cho, Abiko and Isumi, and Naomi (1989b) also from Aoba-cho, Chiba-shi.

2. *Stenus (Stenus s. str.) anthracinus* Sharp

Specimens examined. 1 ex., Tozura, Yoro-Kei-koku, 22. v. 1990, T. Takeda coll.; 1 ex., Kiwada-hata, Kimitsu-shi, 4. iv. 1990, T. Takeda coll.

3. *Stenus (Stenus s. str.) macies* Sharp

Specimen examined. 1 ex., Aoba-cho, Chiba-shi, 2. vi. 1990, R. Kuranishi coll.

4. *Stenus (Stenus s. str.) lewisius* Sharp

Specimen examined. 1 ex., Furutone River, Mikazuki Pond, Abiko-shi, 26. xi. 1989, T. Takeda coll.

5. *Stenus (Stenus s. str.) kobensis* Cameron

Specimens examined. 1 ex., Yomogi, Mt. Kiyosumi, Amatsukominato-cho, 24. iv. 1990, T. Takeda coll.; 2 exs., Sakamoto, Mt. Kiyosumi, Amatsukominato-cho, 29. iv. 1990, T. Takeda coll.

Remarks. This species was collected on the pebbles in the vicinity of torrential stream.

6. *Stenus (Stenus s. str.) sauteri* Bernhauer

Specimens examined. 2 exs., Kitasuga, Narita-shi, 25. iii. 1990, T. Takeda coll.

7. *Stenus (Stenus s. str.) distans* Sharp

Remarks. This species is recorded from Mt. Tomisan and Mt. Takago by Yamasaki (1965, 1972, 1985). Naomi and Takeda collected 3 specimens of what seem to be the females of *S. distans* Sharp from Mt. Kiyosumi in 1990. The species group of *S. distans* are too difficult to determine only by female, so we will plan to make public on this species after the discovery of its male.

8. *Stenus (Nestus) melanarius vercundus*
Sharp

Specimens examined. 2 exs., Jinbei-oohashi, Inba-gun, 22. iv. 1990, T. Takeda coll.

Remarks. This species was recorded from Abiko and Mt. Takago by Yamasaki (1965, 1985).

9. *Stenus (Nestus) japonicus* Sharp

Specimens examined. 1 ex., Matsuzaki, Inzai-cho, 10. xii. 1989, T. Takeda coll.; 1 ex., Hiariura, Oohara-cho, 30. xii. 1989, T. Takeda coll.

10. *Stenus (Nestus) zimmermanni* Puthz

Specimens examined. 3 exs., Yomogi Pass, Mt. Kiyosumi, Amatsukominato-cho, 4. iv. 1990, T. Takeda coll.; 4 exs., Sakamoto, Mt. Kiyosumi, Amatsukominato-cho, 15. iv. 1990, T. Takeda coll.; 5 exs, same locality, 13. v. 1990, T. Takeda coll.; 3 exs., Fudo-Fall, Mt. Kiyosumi, Amatsukominato-cho, 6. v. 1990, T. Takeda coll.; 1 ex., Tozura, Yoro-Valley, Ichihara-shi, 20. v. 1990, T. Takeda coll.

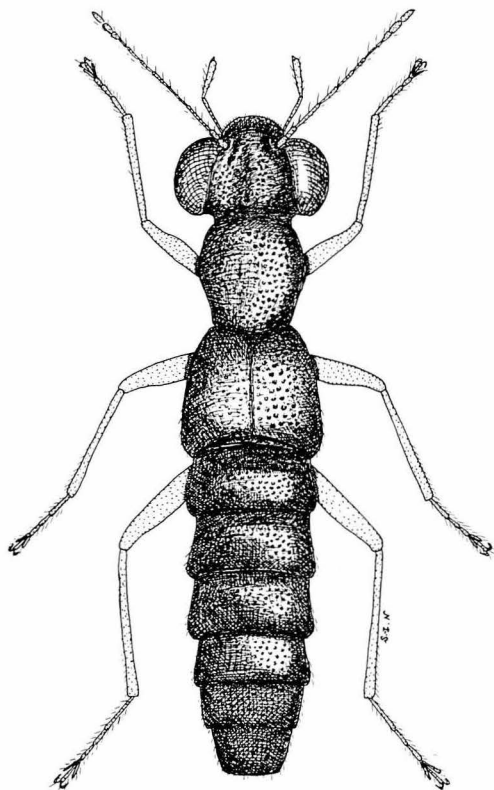


Fig. 1. *Stenus kiyosumiensis* Naomi et Takeda sp. nov.

Remarks. Naomi (1989a) reported this species from Fudago, Kimitsu-shi and illustrated the male genitalia for comparison.

11. *Stenus (Nestus) sexualis* Sharp

Specimens examined. 1 ex., Yata, Shiroyo-cho, 14. xi. 1989, T. Takeda coll.; 1 ex., Uchiurayama, Amatsukominato-cho, 5. iv. 1990, T. Takeda coll.; 1 ex., Suidobashi, Shonan-cho, 13. iii. 1990, T. Takeda coll.

Remarks. This species is small (2.0-2.5mm) and very rare and collected from litters on the forest.

12. *Stenus (Parastenus) sharpi* Bernhauer et Schubert

Specimen examined. 1 ex., Tashiro, Mt. Moto-kiyosumi, Kimitsu-shi, 3. v. 1990, T. Takeda coll.

Remarks. This species is usually distributed in higher mountainous regions in Japan, so it is rare in such low lands as Chiba Pref.

13. *Stenus (Parastenus) rugipennis* Sharp

Specimens examined. 1 ex., Negina River, Shimofusa-cho, 21. iii. 1990, T. Takeda coll.; 1 ex., Fukahori, Oohara-cho, 30. iii. 1990, T. Takeda coll.

14. *Stenus (Parastenus) kiyosumiensis* Naomi et Takeda sp. nov. (Japanese name: Kiyosumi-medaka-hanekakushi)

Male. Body length: 4.1-4.2mm.

Body (Fig. 1) black and shiny, labrum black with anterior margin reddish brown, antennae, maxillary palpi and legs yellowish brown to brown.

Head shorter than (0.76 : 1) and broader than (1.44 : 1) pronotum, 1.74 times as broad as long, frontoclypeal region sparsely covered with golden-yellowish pubescence, and small and round punctures, interocular region shallowly concave, with a pair of longitudinal shallow depression, median part between the depressions very weakly elevated longitudinally; surface densely covered with round, moderate and distinct punctures, punctures on central part similar in size to those near inner margins of eyes, interstices between punctures indistinctly sculptured or without sculpture. Antennae reaching a little before hind margin of pronotum, 1st and 2nd segments robust, 8th narrowest, 9th to 11th form-

ing a loose club, with relative lengths of segments from base to apex as 5 : 5 : 13 : 9 : 8 : 6 : 5 : 4 : 5 : 6 : 7.

Pronotum shorter than (0.89 : 1) and narrower than (0.76 : 1) elytra, moderately convex above, broadest near the middle, moderately constricted at base; surface densely covered with punctures, punctures distinct, sometimes indistinct, somewhat irregular, round to elliptical, interstices between punctures shiny.

Elytra a little broader than long (1.06 : 1), moderately convex above, broadest near posterolateral corners, side margins rounded, hind margins together forming a moderately deep and broad emargination; surface densely covered with regular, round, distinct and large punctures, interstices between punctures distinctly sculptured, hairs yellowish, sparse, decumbent anteriorly or anterolaterally. Hind wings reduced and non-functional.

Legs elongate, hind tarsi 0.74 times as long as hind tibiae.

Abdomen relatively broad and robust, parallel-sided, 3rd to 6th segments each constricted at base, without paratergites; surface covered with moderate, round, distinct and regular punctures

on 3rd tergum, punctures becoming gradually smaller posteriorly from 3rd to 8th terga; 6th and 7th sterna smoothly rounded transversely; 8th sternum with a broad and shallow emargination at posteromedian margin (Fig. 2A); 9th sternum with a pair of apicolateral projections, the projection strongly pointed, hind margin between the projections deeply and arcuately emarginate, with small and acute dents (Fig. 2B). Genitalia (Fig. 2C) with median lobe robust, subparallel-sided, apical part entire, with sclerotized portion which is larger than that in *S. ohishii* Naomi, and its internal part gently protruded basally; internal armatures composed of 5 pieces, basal slender one, median X-shaped one, triangular one behind X-shaped one, and a pair of long bands; parameres thin and straight, with sparse and short hairs on apico-internal margins.

Female. Unknown.

Holotype, male (CBM-ZI 13071), Fudago, Kimitsu-shi, 20. iv. 1989, S. Naomi coll. Paratype, 1 male, Sakamoto, Mt. Kiyosumi, Amatsukominato-cho, 6. v. 1990, T. Takeda coll.

Distribution. Japan (Honshu: Chiba).

Remarks. This new species belongs to *S. indubius*-group, and closely allied to *S. ohishii*

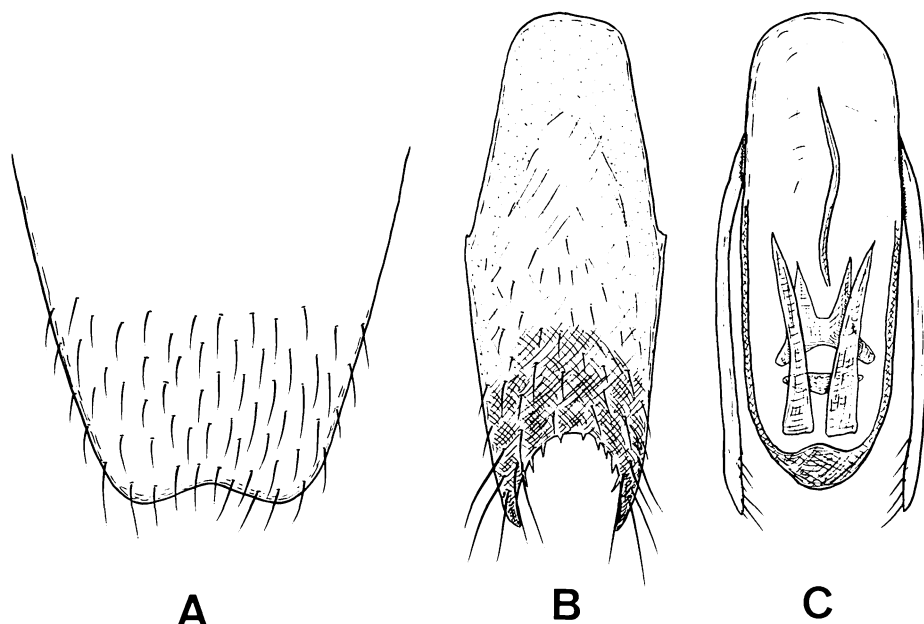


Fig. 2. *Stenus kiyosumiensis* Naomi et Takeda sp. nov. A, Eighth sternum in male; B, 9th sternum in male; C, male genitalia in dorsal view.

Naomi, 1987, judging from the shape of the male genitalia. This species is distinguished from the latter by the entire apical margin of the median lobe in male genitalia, and its internal sclerotized part protruded basally.

15. *Stenus (Hemistenus) latitarsis* Sharp

Specimens examined. 1 ex., Nakazawa, Kamagaya-shi, 2. iv. 1990, T. Takeda coll.; 1 ex., Funabashi-shi, 29. v. 1990, T. Takeda coll.; 1 ex., Akame, Mikurashiba, Mobara-shi, 3. vi. 1990, T. Takeda coll.; 2 exs., Onari-Kaido, Chiba-shi, 3. vi. 1990, T. Takeda coll.; 1 ex., Kaneoya-cho, Chiba-shi, 21. xi. 1989, T. Takeda coll.; 1 ex., Hiariura, Oohara-cho, 23. xii. 1989, T. Takeda coll.; 2 exs., same locality, 30. iii. 1990, T. Takeda coll.

16. *Stenus (Tenus) takedai* Naomi

Specimens examined. 2 exs., Matsuzaki, Inzai-cho, 8. v. 1990, T. Takeda coll.; 1 ex., same locality, 25. iii. 1990, T. Takeda coll.

Remarks. This species was recently described by Naomi (1989a) on the basis of the specimens from Suidobashi, Shonan-cho, etc., and is until now collected from northern part in Chiba Pref.

17. *Stenus (Tenus) laborator* Sharp

Specimens examined. 5 exs., Jinbei-oohashi, Inba-mura, 28. iii. 1990, T. Takeda coll.; 1 ex., same locality, 22. iv. 1990, T. Takeda coll.; 2 exs., Jinbei-oohashi, Narita-shi, 17. xii. 1989, T. Takeda coll.; 6 exs., Negina River, Shimofusa-cho, 21. iii. 1990, T. Takeda coll.; 1 ex., Suka-Shinden, Sakae-cho, 28. iii. 1990, T. Takeda coll.; 2 exs., same locality, 30. x. 1989, T. Takeda coll.; 1 ex., Nakaya, Sakae-cho, 17. x. 1989, T. Takeda coll.

18. *Stenus (Hypostenus) oblitus* Sharp

Specimens examined. 1 ex., Jinbei-oohashi, Inba-mura, 28. iii. 1990, T. Takeda coll.; 1 ex., Funagata, Noda-shi, 6. iv. 1990, T. Takeda coll.; 1 ex., Mizoushiba-hashi, Ooami-shirasato-cho, 30. iii. 1990, T. Takeda coll.; 1 ex., Akame, Mizoushiba, Mobara-shi, 3. vi. 1990, T. Takeda coll.

19. *Stenus (Hypostenus) hirtiventris* Sharp

Specimens examined. 4 exs., Suidobashi, Shonan-cho, 6. i. 1990, T. Takeda coll.; 3 exs., same locality, 9. i. 1990, T. Takeda coll.; 4 exs., same locality, 18. iii. 1990, T. Takeda coll.; 3 exs.,

same locality, 10. xii. 1989, T. Takeda coll.; 5 exs., Nakaya, Sakae-cho, 17. x. 1989, T. Takeda coll.; 8 exs., Tone-Canal, Nagareyama-shi, 6. iv. 1990, T. Takeda coll.; 1 ex., Suka-Shinden, Sakae-cho, 28. iii. 1990, T. Takeda coll.; 1 ex., Tozura, Yoro-Valley, 22. v. 1990, T. Takeda coll.; 1 ex., same locality, 20. v. 1990, T. Takeda coll.; 2 exs., Mefuki-Oohashi, Noda-shi, 12. xi. 1989, T. Takeda coll.

20. *Stenus (Hypostenus) cicindeloides* (Schaller)

Specimens examined. 2 exs., Tozura, Yoro-Valley, 22. V. 1990, T. Takeda coll.

Remarks. This species is common in Japan. Yamasaki (1985) reported it from Abiko and Futtsu.

21. *Stenus (Hypostenus) mercator* Sharp

Specimens examined. 1 ex., Suidobashi, Shonan-cho, 9. i. 1990, T. Takeda coll.; 2 exs., same locality, 6. i. 1990, T. Takeda coll.

22. *Stenus (Hypostenus) santira* Naomi

Specimens examined. 6 exs., Fudago, Kimitsu-shi, 20. iv. 1989, S. Naomi coll.; 1 ex., Yomogi-Pass, Mt. Kiyosumi, Amatsukominato-cho, 4. iv. 1990, T. Takeda coll.; 1 ex., Sakamoto, Mt. Kiyosumi, Amatsukominato-cho, 29. iv. 1990, T. Takeda coll.

References

- Naomi, S. 1987. Studies on the subfamily Steninae (Coleoptera, Oxyporidae) from Japan, VII. Subgenus *Parastenus* of the genus *Stenus* Latreille (Part 2). Akitsu, N. Ser. (87): 1-9.
- Naomi, S. 1989a. Studies on the subfamily Steninae (Coleoptera, Staphylinidae) from Japan, XVII. Descriptions of five new species of the genus *Stenus* Latreille. Nat. Hist. Res. (1): 99-107.
- Naomi, S. 1989b. *Stenus alienus* Sharp. Tomonokai News, Nat. Hist. Mus. Inst. Chiba (6): 3. (In Japanese)
- Yamasaki, H. 1965. A list of Coleoptera from Mt. Takago. Basic Data Fauna Chiba Pref. (4): 59-77. (In Japanese)
- Yamasaki, H. 1967. Coleoptera from the northern part of Chiba Pref. (1st report). Basic Data Fauna Chiba Pref. (6): 79-111. (In Japanese)
- Yamasaki, H. 1972. The Coleoptera fauna of Mt.

Tomisan, Chiba Prefecture, Japan. Basic Data Fauna Chiba Pref. (II): 13-47. (In Japanese)
Yamasaki, H. 1985. Coleoptera (1). In Board of Investigation for Natural History in Chiba Pref. (ed.), Wish-list for collecting, Zoology and Geology (1), Nat. Hist. Mus. Inst. Chiba, pp. 38-71. Chiba. (In Japanese)

日本産メダカハネカクシ亜科
(甲虫目, ハネカクシ科) の分類学的研究
XVIII. 千葉県メダカハネカクシ相

直海俊一郎¹⁾・武田卓明²⁾

1) 千葉県立中央博物館 〒280 千葉県青葉町955-2

2) 〒274 船橋市松ヶ丘1-22-4

千葉県からは、メダカハネカクシ属はこれまで6種しか知られていなかった。1989年から1990年における千葉県の野外調査で、新たに16種を見いだすことができたので、本論文でこれらを新分布として報告する。これで千葉県には、メダカハネカクシ属は22種分布していることが判った。さらに、その内の1種は、*Parastenus* 亜属の *indubius* 群に分類される新種であることが判明したので、*Stenus kiyosumiensis* Naomi et Takeda として記載した。本種は千葉県南部の清澄山系から記録されたので、和名をキヨスミメダカハネカクシと命名した。なお本種は、四国、九州に分布する *Stenus ohishii* Naomi, 1987 に似ていて、外見上区別が困難であるが、雄交尾器の中央片先端部に突起がなく、その先端の硬化部の内縁が基方に向かい緩やかに突出することにより区別される。