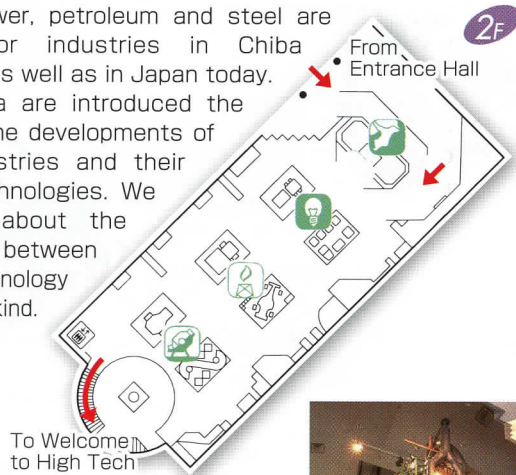


History of Industry

Electric power, petroleum and steel are three major industries in Chiba prefecture as well as in Japan today.

In this area are introduced the history of the developments of these industries and their modern technologies. We will learn about the relationship between science technology and the mankind.



The History and Future of Chiba's industry

The Keiyo Industrial Area
The History of Chiba's Industry



First Use of Electricity, Petroleum, and Iron

First Use of Electricity
First Use of Petroleum
First Use of Iron



Electric Power Industry

Early Development/Beginning of Power Generation
Beginning of Mass Production of Electric Power
Beginning of Mass Consumption of Electric Power
Today's Power Plants



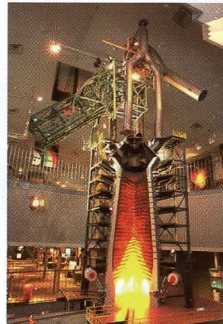
Petroleum Industry

Early Development/Kerosene
Beginning of Mass Production of Petroleum
Beginning of Mass Use of Petroleum
Today's Petrochemical Complex

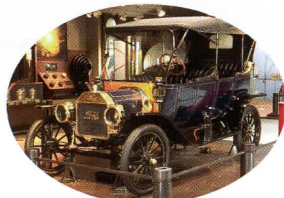


Iron and Steel Industry

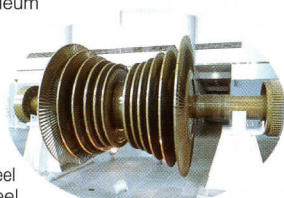
Early Development/Iron Making by Using Charcoal
Beginning of Mass Production of Iron and Steel
Beginning of Mass Use of Iron and Steel
Today's Iron and Steel Works



First Blast Furnace at Kawasaki Steel Corporation in Chiba (1/10model)



Ford Model T (Original Model)

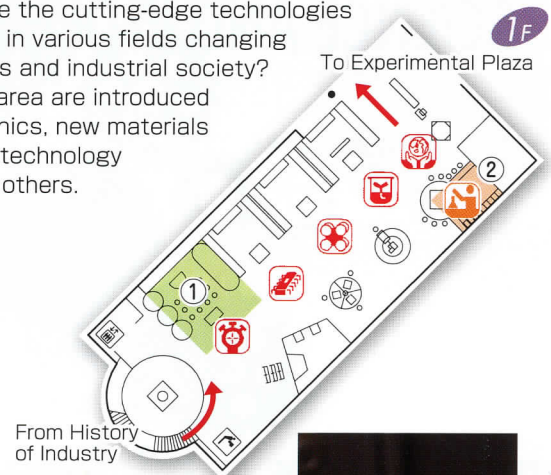


Turbine Rotor at the First Thermal Power Station in Chiba(Original Model)

Welcome to High tech

How are the cutting-edge technologies applied in various fields changing our lives and industrial society?

In this area are introduced electronics, new materials and biotechnology among others.



The Technology of High-Technology

What is High Technology?
Creating Extreme Environments

Experiment Theater ①
Experiment of freezing and super conductivity
(About 15 minutes)



Experiment using liquid nitrogen at -196°C



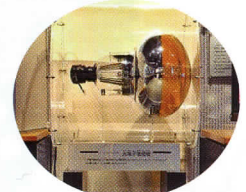
Electronics

What is Electronics?
The Spread of Electronics
Electronics Experience



New Materials

What are New Materials?
The Spread of New Materials.



Photomultiplier tube (Original Model)



Biotechnology

What is Biotechnology?
The Spread of Biotechnology



High Tech and the Global Environment

What is the Global Environment?
Change in Global Environment
Monitoring the Global Environment



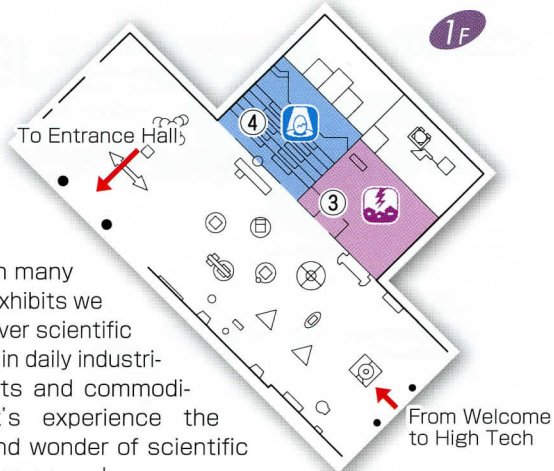
Experiment Counter



Experiment Counter ②

About 20 different kinds of experiments such as one of shape memory alloys are alternately performed (About 15 minutes)

Experimental Plaza



Here, with many hand-on exhibits we can discover scientific principles in daily industrial products and commodities. Let's experience the beauty and wonder of scientific phenomena around us.

Science of Creativity

Bubble Labyrinth
Atom Pattern
Popping Ring
Dancing Water
Resonating Pan
Climbing Waves
Infinite Space
Spinning Top Illusion
The World of the Curved Mirror
Tunnel of Light
Tornado
Vortex
Floating Ball
Ball circus

Science of Daily Life

Techno-Box
Water Powered Rocket
Magic motor
Pin Hole Camera
Anthony Camera
Autofocus Camera
3D Animation
Voice Game
3D World
Immiscible Liquid
Pendulum
Listening Parabola
Human Battery
Power Generation by Manpower



Experimental Plaza



Lightning Experiment of Creeping Discharge



Lightning Hall

(About 10 minutes)

③

Three kinds of Discharge Experiments



Science Stage

(About 20 minutes)

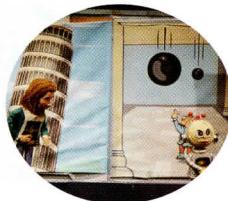
④

Puppet shows depicting lives of famous scientists and inventors.

Entertaining Scientific Experiments

Gulliver's Straw

Gulliver's Soap Bubble



Puppet shows at Science Stage

Workshop

This is a section for various hands-on displays.

Mini Exhibition Corner

Small scale exhibitions of scientific technologies are presented.

Science Information Corner

This is a section for those who wish to Know more in detail about the museum or scientific technologies.

Laboratory/Study Room

Workshops are held in the laboratory.

Lectures and study sessions are held in the study room.

Science Dome

Here, with dome screens with the diameter of 23m, spectacular planetarium and large-scale films are shown. (Showings on limited term basis.)

Science Dome Gallery

Small scale exhibitions and exhibitions of collection materials are held. (Science Dome 1F)